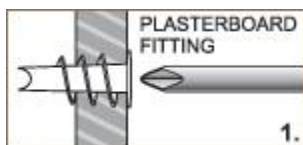


# The Gallery System

## Directions - Track

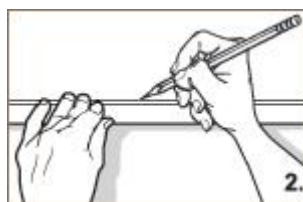


### READ ALL INSTRUCTIONS BEFORE FIXING TRACK TO THE WALL

**NOTE:** It is recommended your track is secured to the wall by screwing into as many wall studs as possible. If it is not possible to line up with all available wall studs you can use plasterboard fittings (see illustration 1).

**NOTE:** If using the Gallery System Clear Tape system, leave at least a 40mm gap between tracks for the hangers to be inserted into the end of the track.

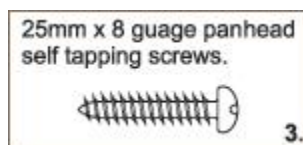
**NOTE:** If you plan to add The Gallery Lighting System, it is recommended to install track no higher than 2.7m from the floor. Additionally, you must leave at least a 1.5cm gap between the top of the track and the cornice/ceiling.



### Fixing to Plasterboard

Drill a 4mm hole in the centre of the length of track, using the V groove in the top of the track as a guide. Drill a hole at least 20mm from each end of the track and finally drill the remaining holes 400 to 500mm apart depending on the location of your wall studs. This configuration will result in at least five screws per 2m length and seven screws per 3m length.

Decide on the height at which you would like the track. **IMPORTANT:** If you plan to install our lighting system leave at least 15mm between the top of the track and ceiling to allow space to fit the light wand.

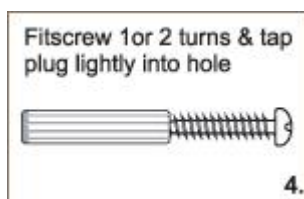


Mark with a pencil at intervals measuring down from the ceiling to ensure the track is level. Using the track as a ruler mark the wall with a pencil (see illustration 2).

Mark the position of the centre hole on the wall, then tap a small nail into the plasterboard.

If it hits a wall stud, fix the track in place with a 25mm x 8 gauge pan head screw, (see illustration 3) if not, fit a plasterboard fitting first.

Mark the positions of the remaining holes. Remove the track and tap a nail into each marked position to check for studs. Screw in the plasterboard fittings where needed, and then screw the track to the wall.



### Fixing to Masonry

It is often hard to drill holes into masonry accurately as the drill tends to move off target. Consequently, we suggest the following:

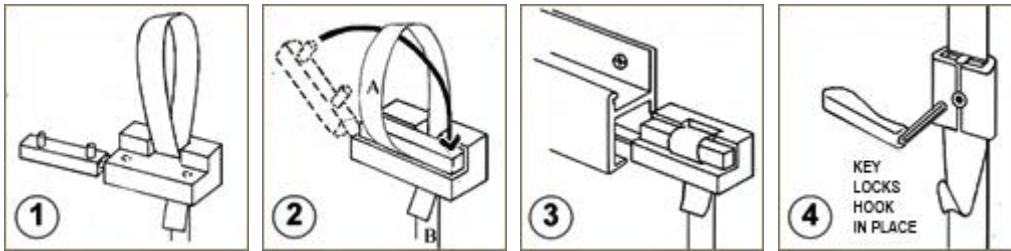
Predrill your track starting with a 5mm hole in the centre of the length of track. Next drill a hole at least 20mm from each end of the track and finally drill the remaining holes 400 to 500mm apart. This configuration will result in at least five screws per 2m length and seven screws per 3m length.

Decide on the height at which you would like to install the track and mark the wall with a marker pen or a scribe (see fixing to plasterboard) using the track as a ruler. Mark the position of the centre hole on the wall. Hold the track firmly in position on the wall and using the centre track hole as a guide, drill a 5mm hole through into the masonry. Drill 10mm deeper than the length of your wall plugs. Remove the track and fit the 5mm wall plug into the holes (see illustration 4). If it won't go full depth the screw allows, remove the wall plug, redrill and try again.

Screw the track temporarily in place then, using the holes in the track as a guide, drill the remaining holes in the masonry. Unscrew the track and insert remaining wall plugs and screw the track to the wall.

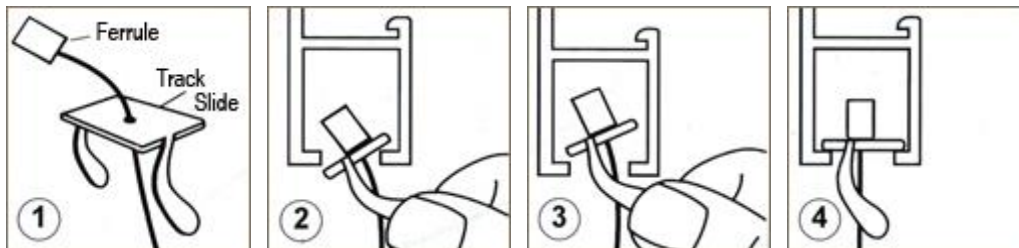
## Directions - Gallery Clear Tape System

1. Pull tape from dispenser pack and cut off required length. Feed tape up through slot in the locking capsule and then back down through the same slot to form a large loop.  
**IMPORTANT:** The short end must be to the front of the capsules as shown **or the locking action will fail.**
2. Swing the locking bar through the loop (A) of the tape as shown and press fully down. Pull long end of tape (B) down to tighten the loop over the locking bar.
3. Pinch the capsule firmly with your fingers and then insert into the end of the track as shown with the locking bar to the front.
4. Fit the hook to the tape as shown.



## Directions - Gallery Stainless Steel Cables or Clearline Hangers

1. First feed the wire or clearline cable through the track slides as shown.
2. Tilt the track slide to insert into the underside of the track (can be fitted at any point along the track).
3. Straighten the track slide so it sits level in the track.
4. The hanger is now captive and ready for the hook to be fitted.

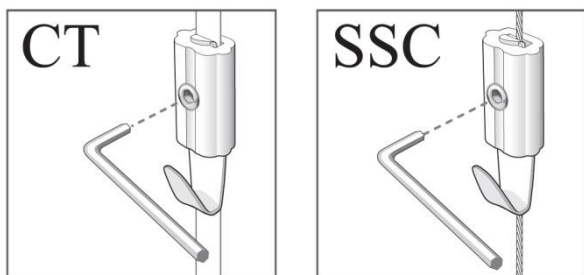


## Directions - Gallery System Standard Allen Key Hooks

These Hooks are for use with both Gallery Clear Tape and the Gallery Stainless Steel Cable Hangers.

**DIRECTIONS:** Slack off the screw using the key provided and feed the end of the clear tape (or stainless cable) through the hook body. Slide to the required position and tighten.

**RECOMMENDED WEIGHT:** On the Gallery Clear Tape Hangers 15kg per hook. On the Gallery Stainless Cable Hangers 20kg per hook.



## Directions - Gallery Push-Button Hooks

These are available to suit The Gallery System Stainless Steel Cable Hangers or our new Clearline Push button hooks to suit clearline hangers.

**DIRECTIONS:** Feed the stainless steel cable into the hole in the top of the hook. Push the button down and the hook will move freely on the hanger. The hook grips the cable when the button is released.

**RECOMMENDED WEIGHT:** On the Gallery System Stainless Steel Cable Hangers - 20kg per hook (up to 40kg using two). On the Clearline Hanger 6kg per hook (up to 12kg using two)

